

Medium type Plastic conduit systems (750Nt)

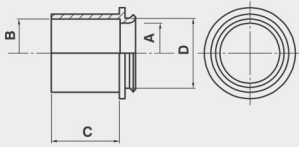
MEDISOL® AM Adaptor

Properties

Raw material



Halogen free, heavy metals free (RoHS) and specially stabilized thermoplastic PO blend

RAL 9003



Assembled with
MEDISOL AM Junction box



Type	Part number	A	R	C	D		
Ø16	4044016	13	16	16	20	4x30	1800
Ø20	4044020	16.5	20	20	20	4x30	1200
Ø25	4044025	21.5	25	32	33	20	1080
Ø32	4044032	27.5	32	35	33	20	840

Guidelines: Assembled with MEDISOL AM junction boxes after removing their seals. Adaptors with Part No. 4044016 and 4044020 can be mounted on junction boxes with type Ø16/20 and Ø20/16 while 4044025 and 4044032 can be mounted with the type Ø25/32.